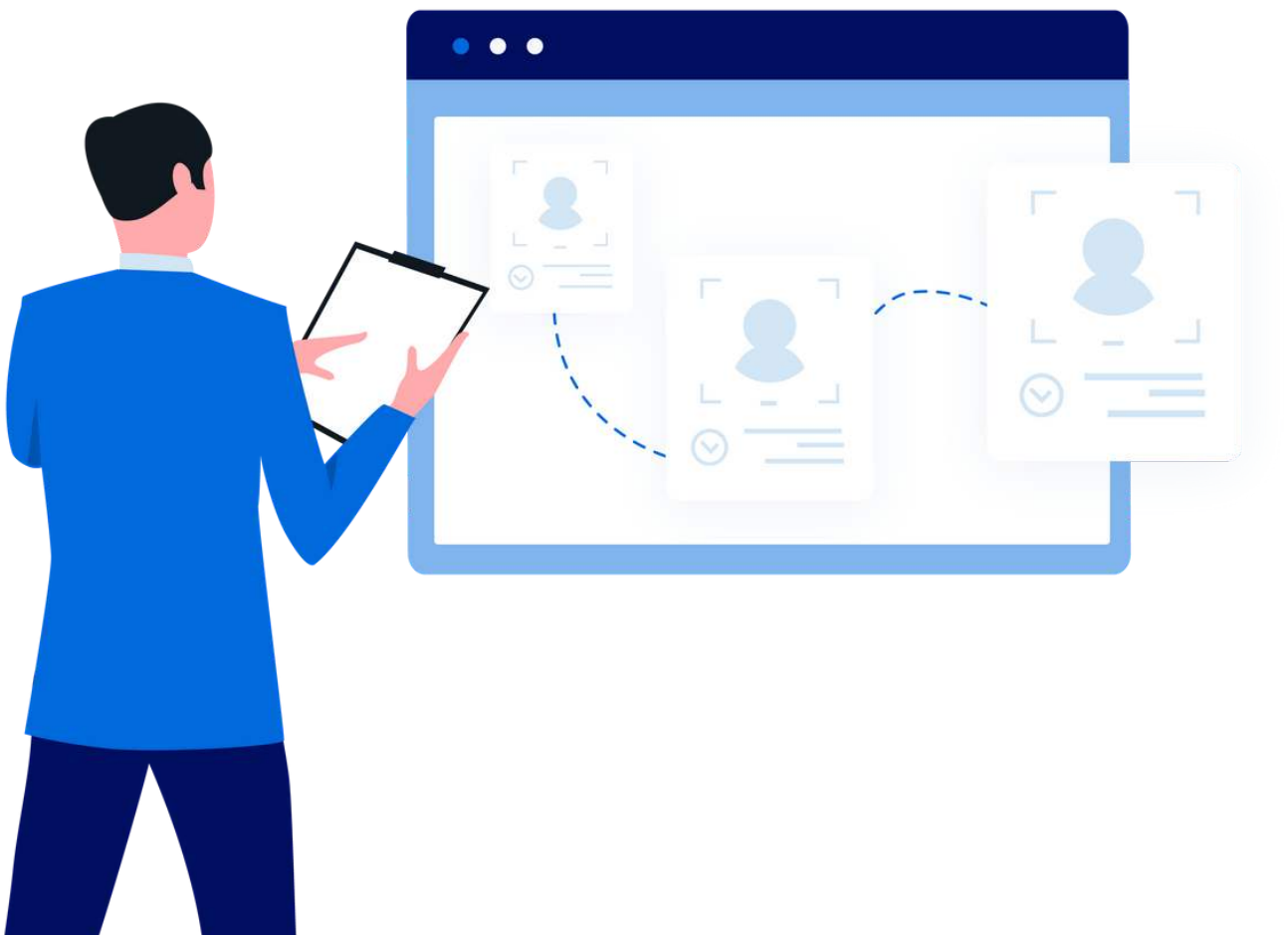


Help Articles

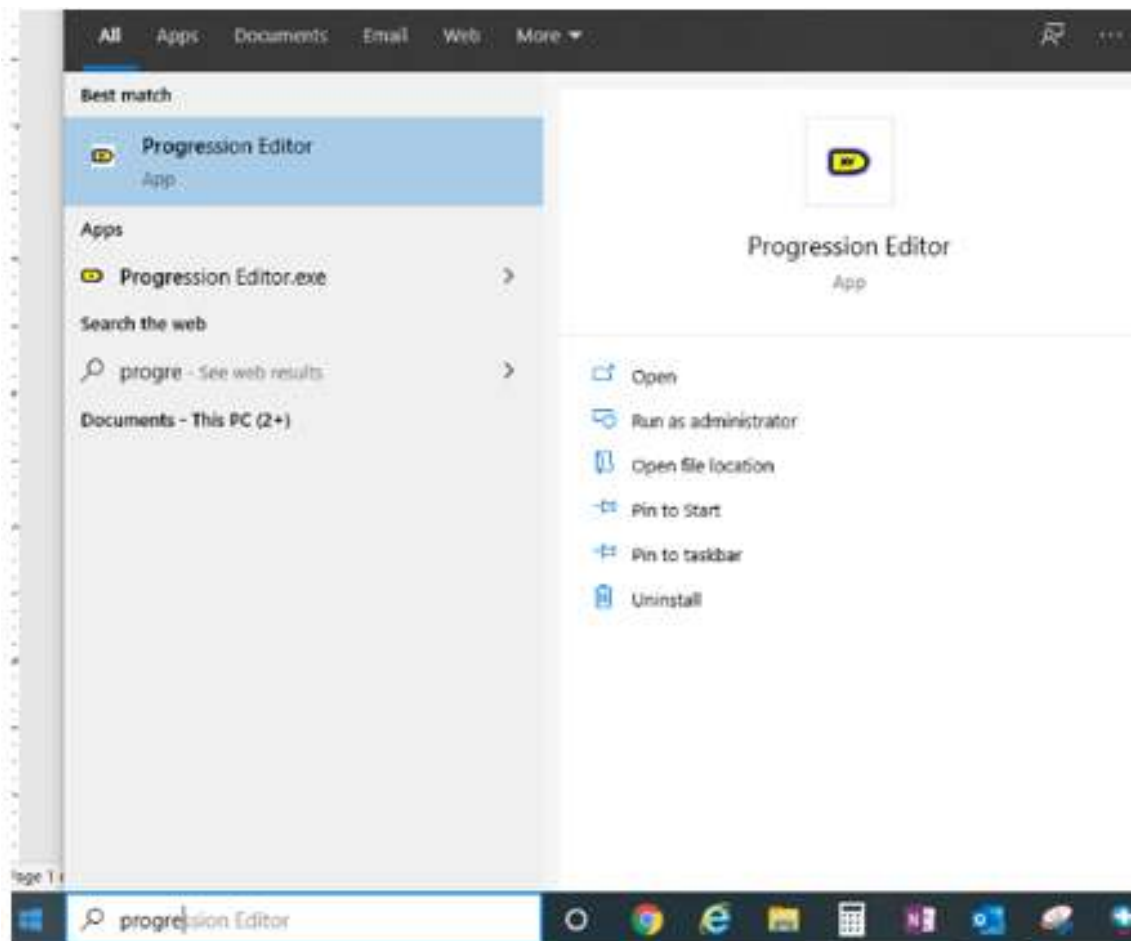
How are we able to create a new Progression in Apteryx XVCapture?



How are we able to create a new Progression in Apteryx XVCapture?

In XVCapture mounts, layouts, or templates are called Progressions. In order to create a new Progression in XVCapture we must use the Progression Editor that comes with the XVCapture software.

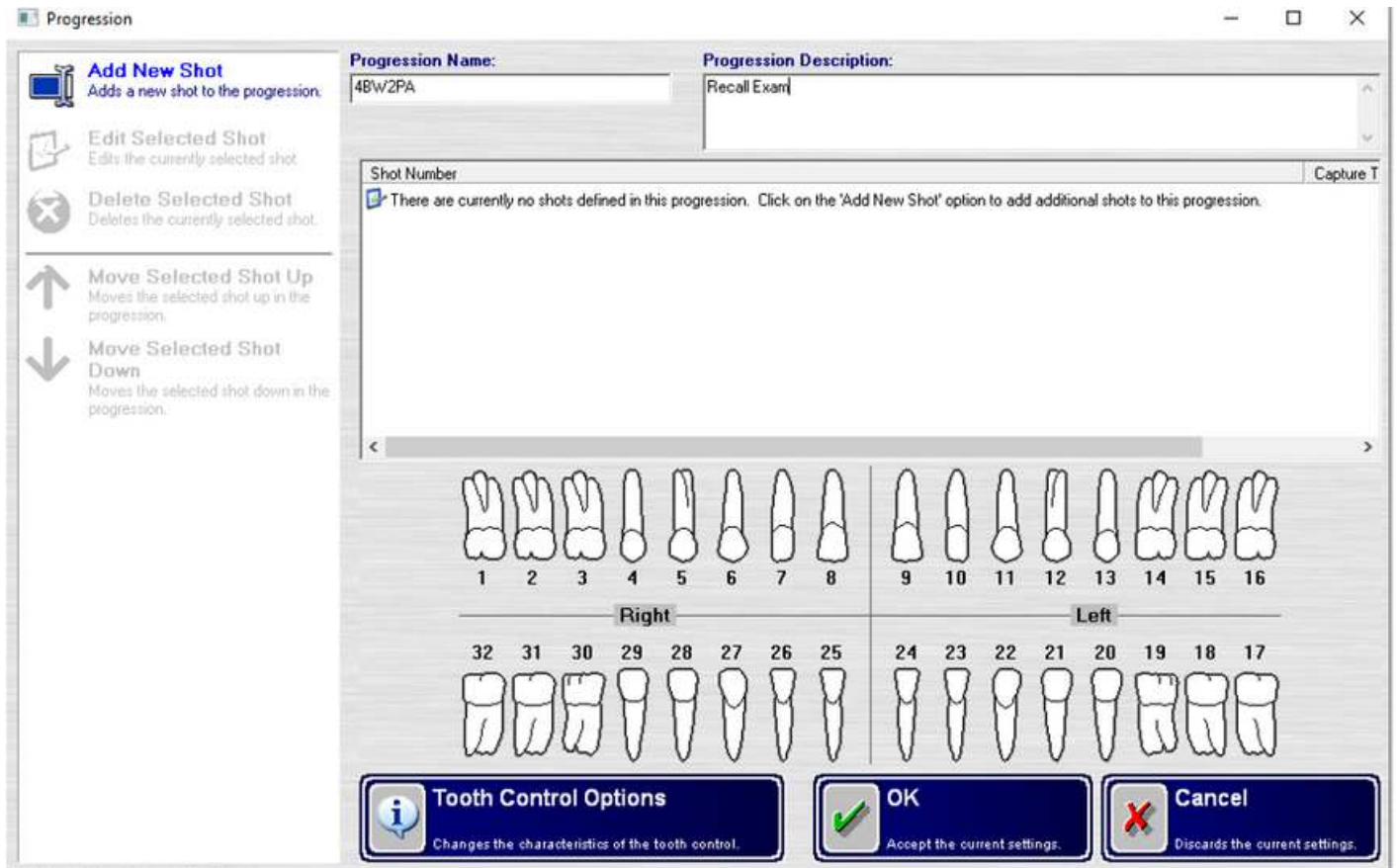
To open the Progression Editor, simply click on the Start button in the lower left hand corner of your desktop, and type the word Progression. After a few characters, Progression Editor should appear at the top of the list.



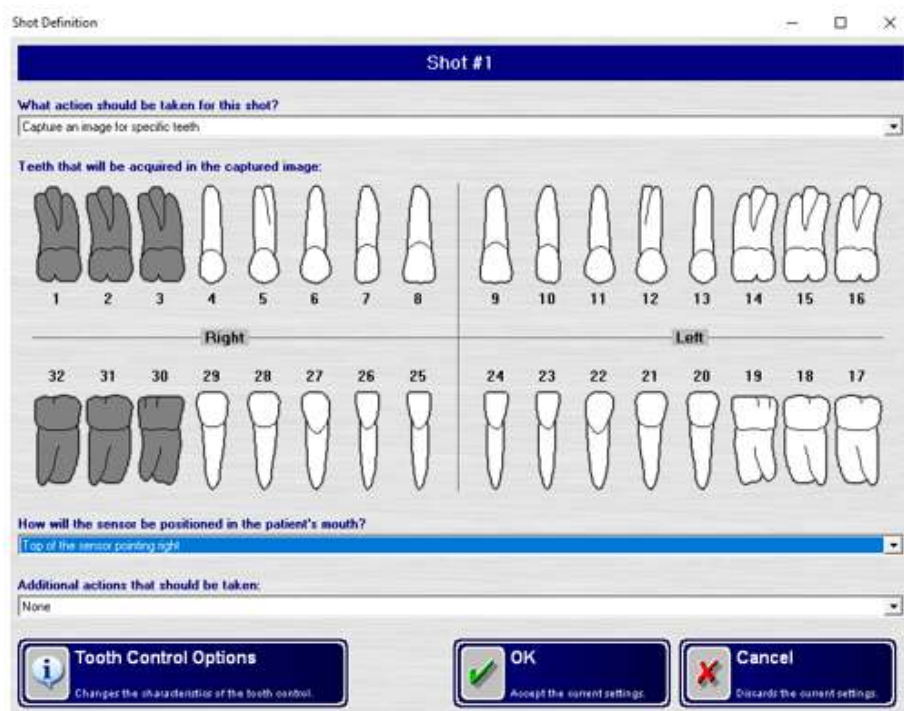
That will open the Progression Editor.



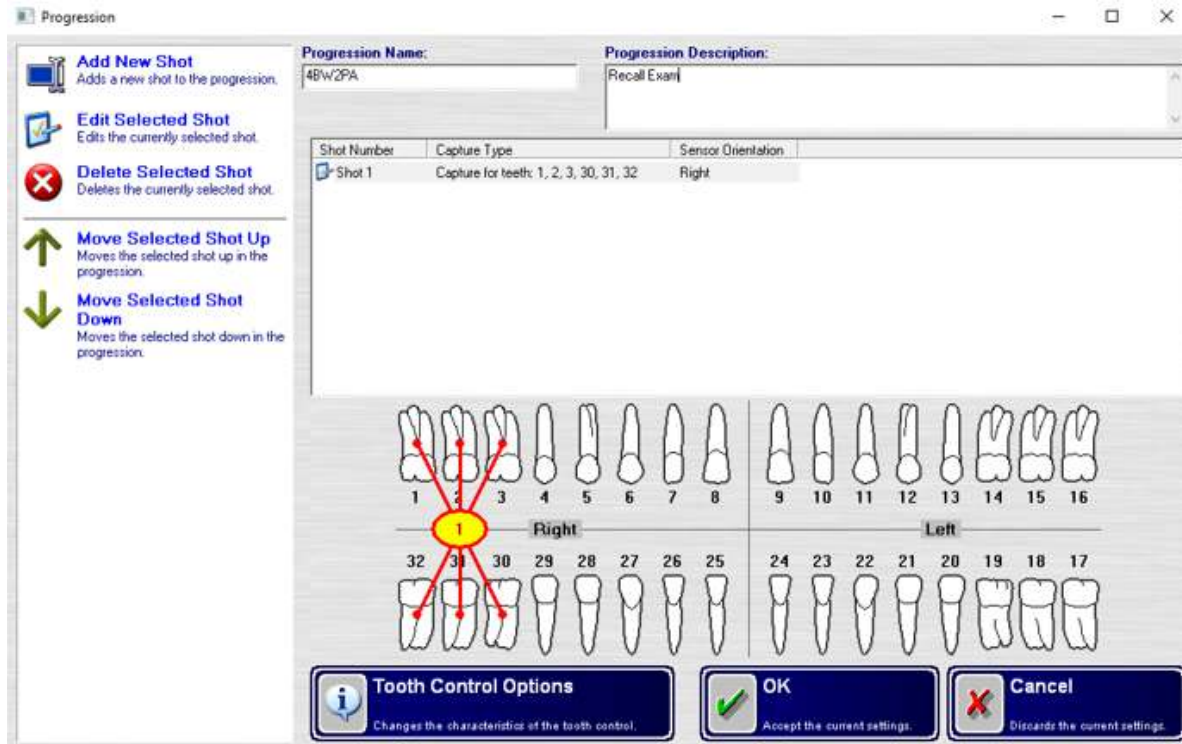
The first step to creating a new progression is to give it a name and if desired, a description.



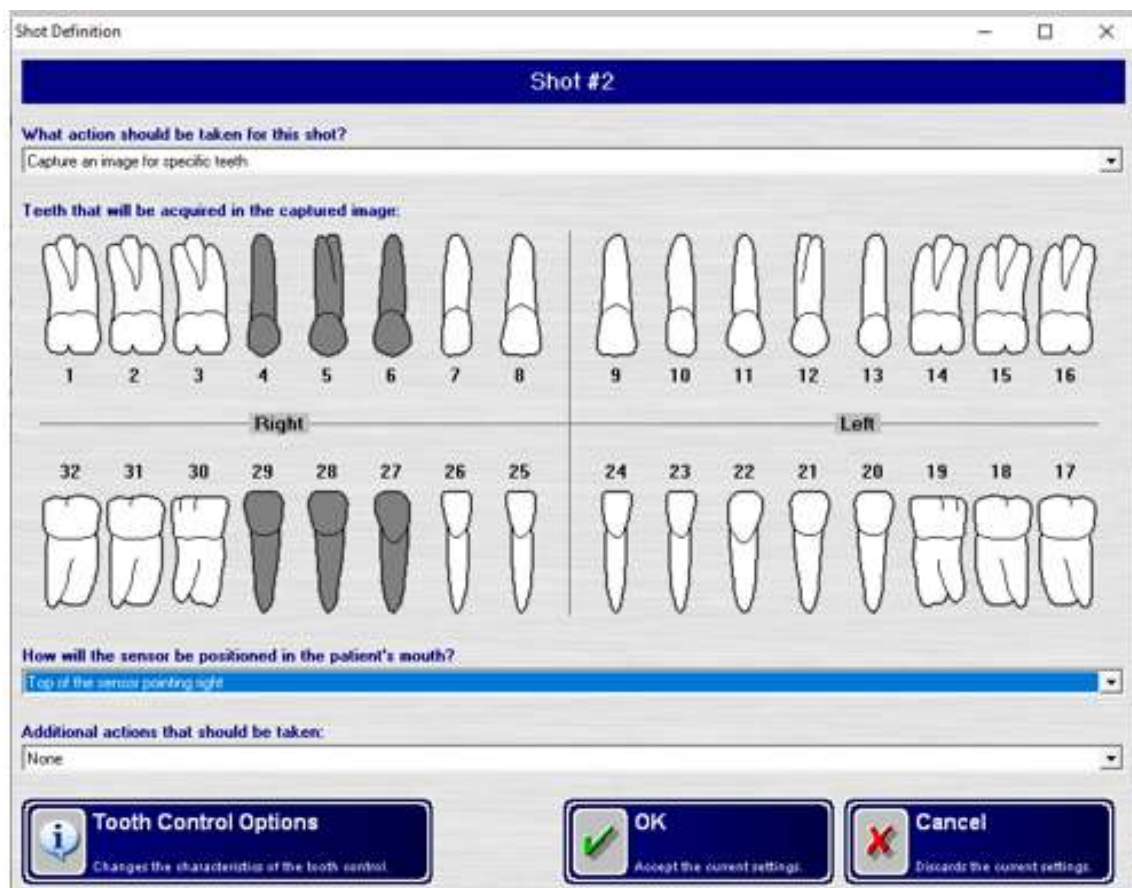
After naming your progression select Add New Shot. Then you will need to select which teeth are in the first x-ray taken for the new progression. You'll also need to set the sensor orientation to match your shot. The sensor's orientation is related to the patients right and left. If the image is for teeth on the patient's right, the sensor needs to be set to "Top of the Sensor Pointing Right". Then select OK.

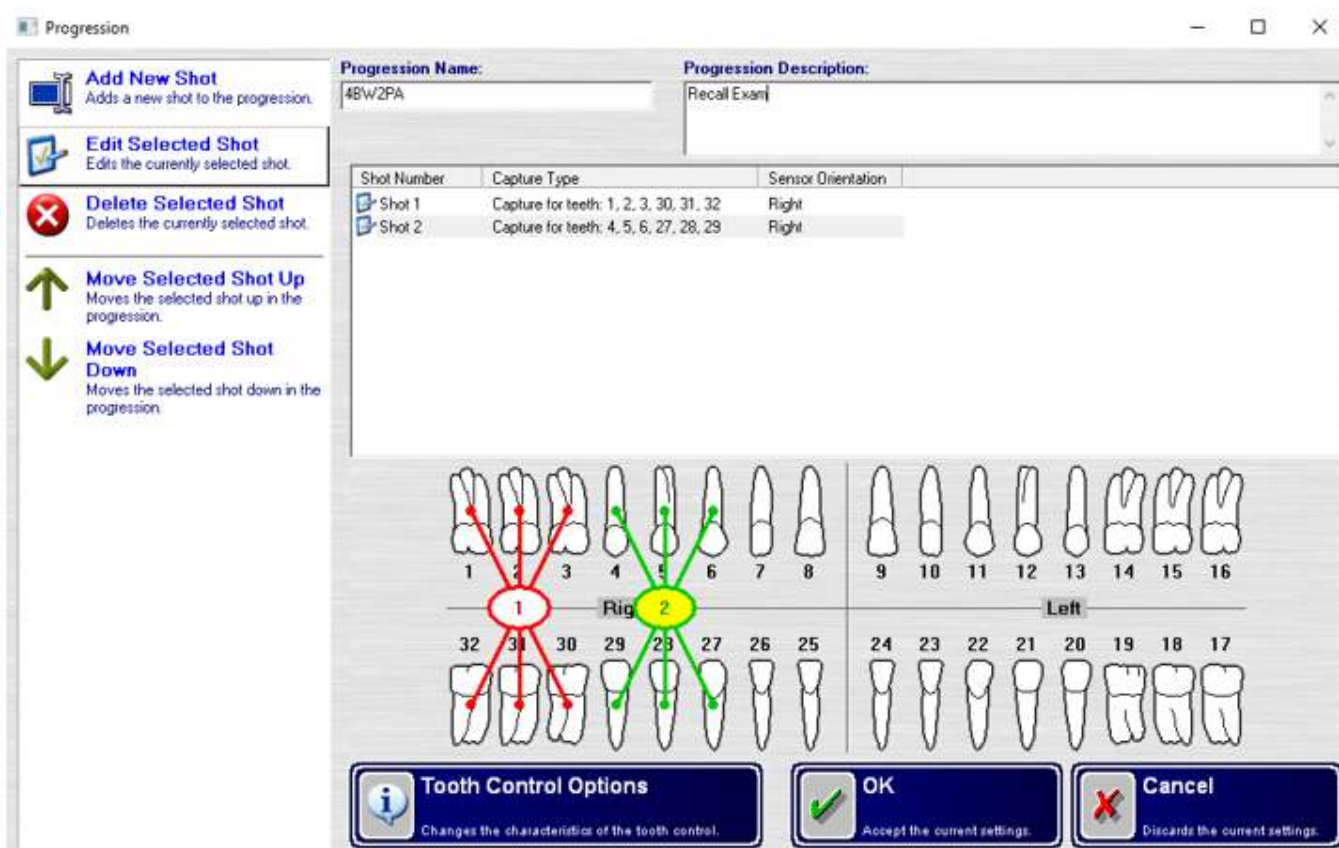


When you click OK to save that first shot, you can then add another shot. You should start seeing your progression taking shape as well.

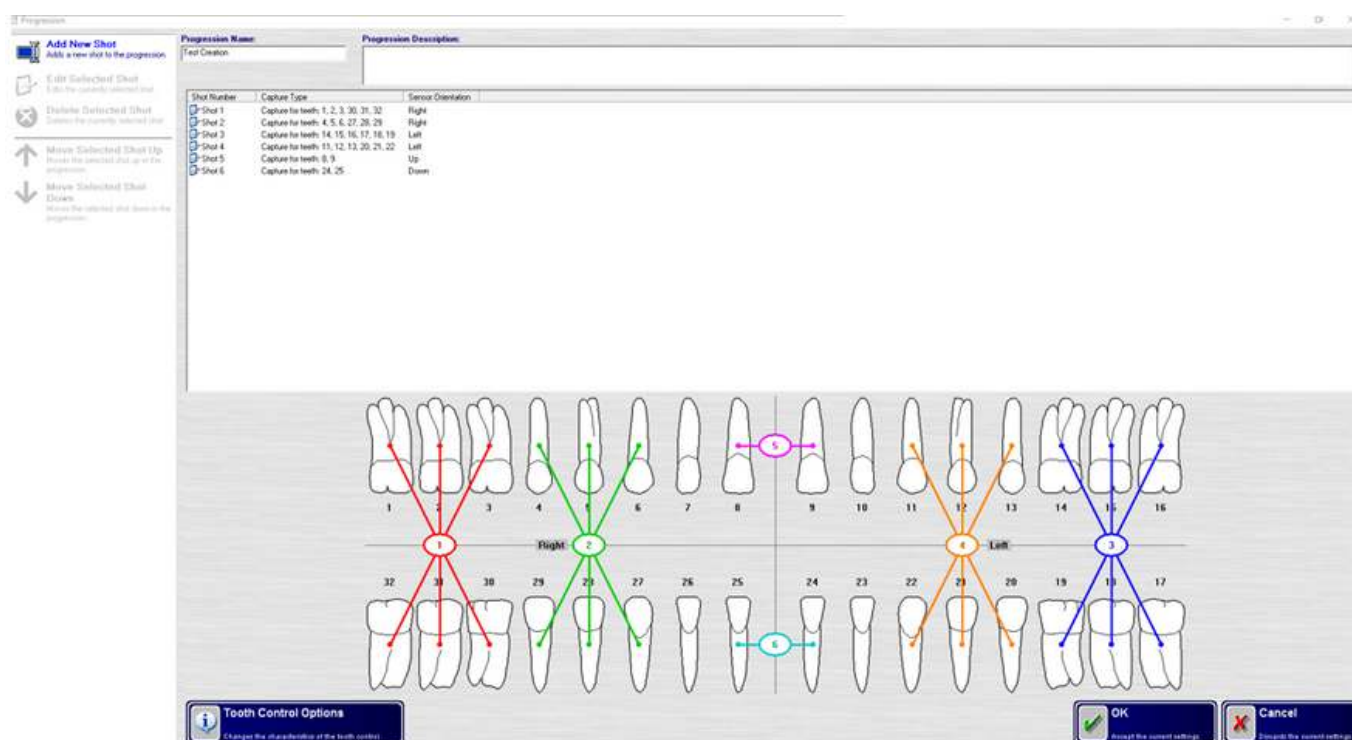


Repeat the steps to create your second shot, third shot, and so on.





When you have recorded all of the shots for your progression simply click "OK" to save them. Then you will be brought back to the Progression Editor Progression main screen where you can start building a new one, edit an existing one, or simply exit if you are finished.



Create New Progression
Creates a new progression.

Diagnose Selected Progression
Diagnose a new progression based on the currently selected progression.

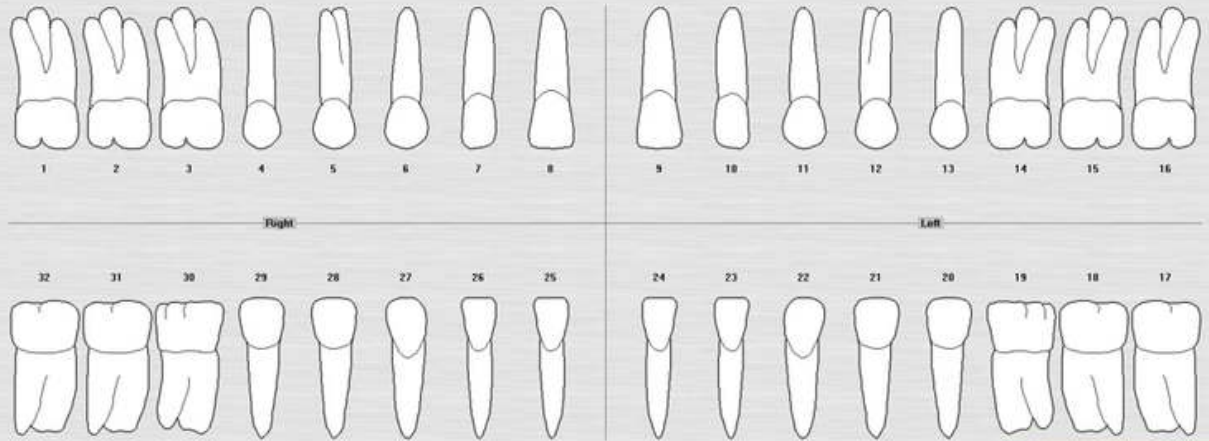
Edit Selected Progression
Edit the currently selected progression.

Delete Selected Progression
Delete the currently selected progression.

Close
Close the application.

Name	Description	Filename
2 2 Bite Ring Series	Standard 2 bite ring series capture	C:\Program Files (x86)\Apex\Progression\DOV\Bite_2_Bite_Ring_Series_Progression
4 4 Bite Ring Series	Standard 4 bite ring series capture	C:\Program Files (x86)\Apex\Progression\DOV\Bite_4_Bite_Ring_Series_Progression
4 Vertical Bite Ring Series	Standard 4 bite ring series capture	C:\Program Files (x86)\Apex\Progression\DOV\Bite_4_Vertical_Bite_Ring_Series_Progression
4 Vertical Bite Ring Series Up	Standard 4 bite ring series capture	C:\Program Files (x86)\Apex\Progression\DOV\Bite_4_Vertical_Bite_Ring_Series_Progression
Continuous Endo Series	Continuous endo series capture	C:\Program Files (x86)\Apex\Progression\DOV\Bite_Continuous_Endo_Series_Progression
FMC 815	Standard FMC 815 capture	C:\Program Files (x86)\Apex\Progression\DOV\Bite_FMC_815_Progression
FMC 818	Standard FMC 818 capture	C:\Program Files (x86)\Apex\Progression\DOV\Bite_FMC_818_Progression
FMC 821	Standard FMC 821 capture	C:\Program Files (x86)\Apex\Progression\DOV\Bite_FMC_821_Progression
multiple	multiple	C:\Program Files (x86)\Apex\Progression\DOV\Bite_multiple_Progression
Peds FMC	Standard peds FMC capture	C:\Program Files (x86)\Apex\Progression\DOV\Bite_Peds_FMC_Progression
Test Creation	Test Creation	C:\Program Files (x86)\Apex\Progression\DOV\Bite_Test_Creation_Progression

(Pick an entry from the list above)



Tooth Control Options
Change the manipulation of the tooth control