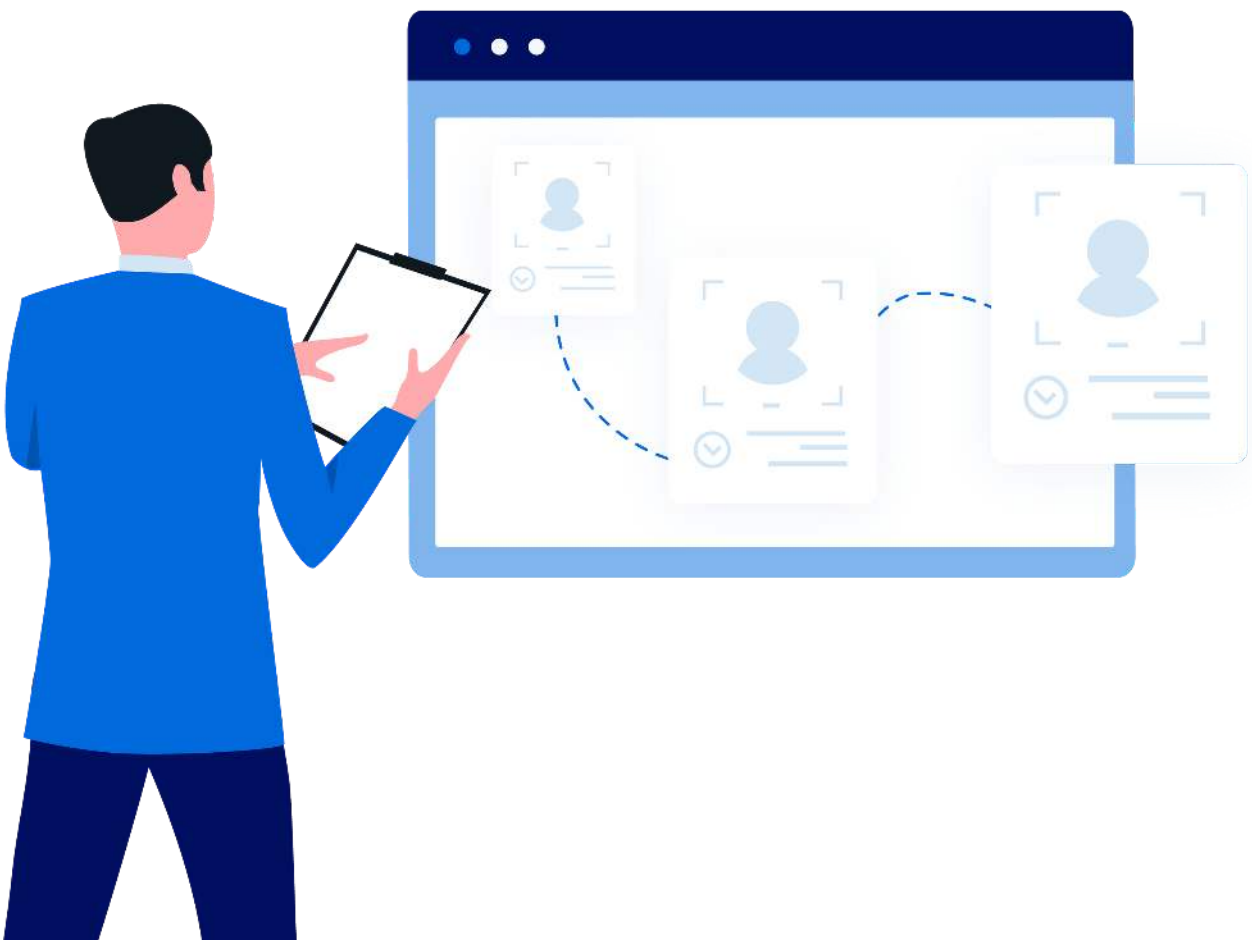


Help Articles

What is AppointNow?



What is AppointNow?

AppointNow! is an online application which allows a patient to self-schedule an appointment according to your unique office policies, scheduling preferences, and appointment availability.

AppointNow! features include:

- **Unique Office Profile.**
 - After registering, the dental practice's owner/administrator will be given the login information to a unique Office Profile Account. The information is used by the scheduling agent to answer any specific questions about your office. It is also used to populate the FAQs data on your AppointNow application (Given with signed contract from sales rep)
- **Scheduler Setup.**
 - As part of the Office Profile, the office will be guided regarding the set up of the Denticon scheduler to indicate what day(s) and time(s) the office will allow for online appointments. AppointNow does not allow for editing the days/hours through AppointNow; they can only be updated within the Denticon program. AppointNow will automatically update the hours once Denticon is updated. This step is necessary for online scheduling. PDDS-Customer Support Assistance is available if needed.
- **Button for your website**
 - Your AppointNow! Web link can be located within the office's Denticon program: Help=> Help & Support=> AppointNow. Copy this link and embed into the office's web page, or supply the link to your web designer. (PDDS-Customer Support Assistance is available if needed)

- **Your customized version of AppointNow.**
 - Once the visitor to your website clicks on the button, the office's customized version of AppointNow is launched.
- **Basic questions.**
 - The visitor answers some basic questions. Based on the answers, Denticon searches the schedule for the requested appointment time/day, and offers several options for the patient to choose.
- **Post-appointment communication.**
 - After the appointment is scheduled, the AppointNow system sends an appointment summary email to the patient, if the patient has entered an email address. The AppointNow system also sends the office an email. An email address must be listed under the office set up for the dental office to receive an email.