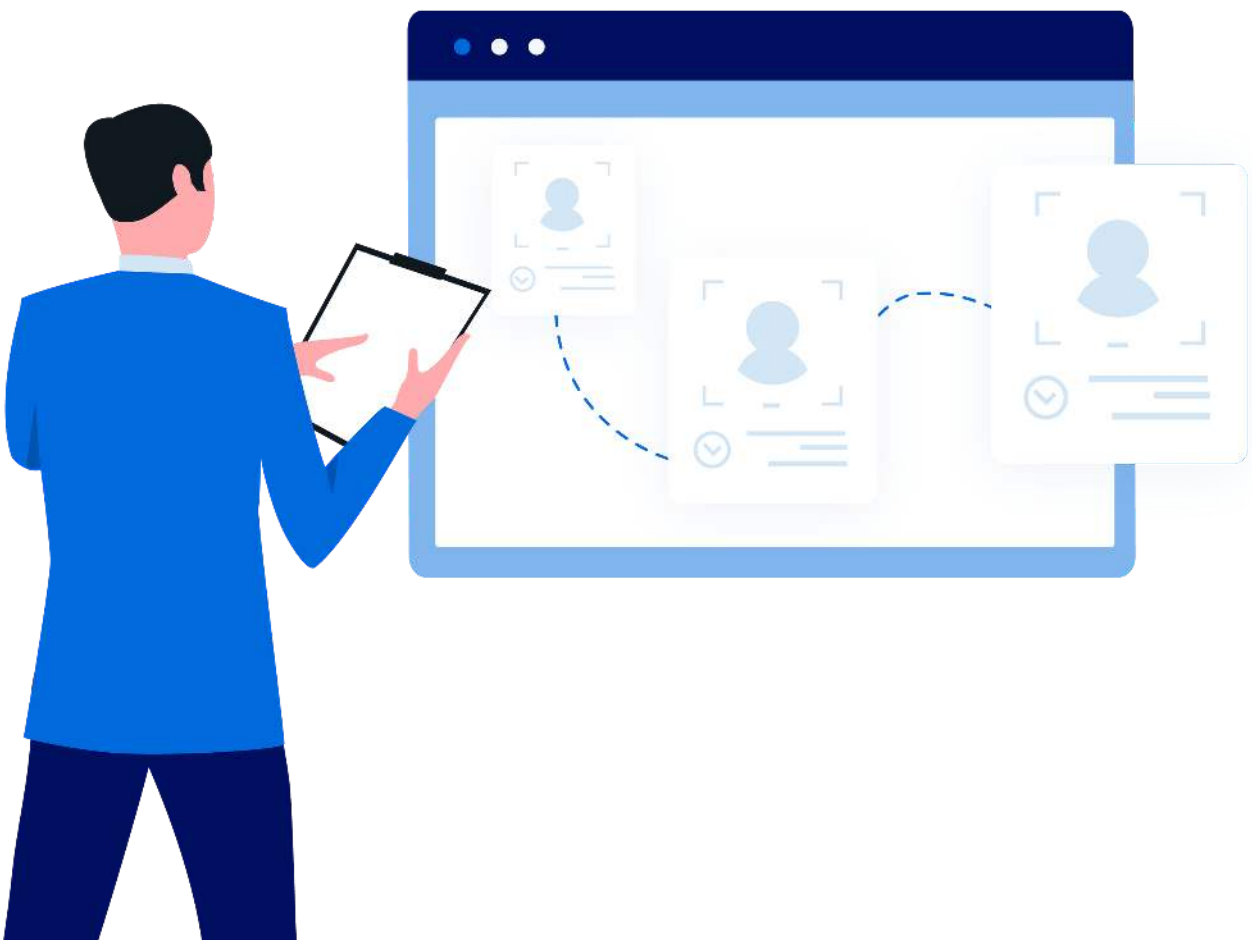


Help Articles

How can I make a Custom Layout in Dentiray Web?



How can I make a Custom Layout in Dentiray Web?

This guide will walk you through how to make a custom layout within Dentiray Capture. Custom layouts can be used standalone within Dentiray Web or if you create a custom progression within Dentiray Capture, a custom layout will need to be created within Dentiray Web to match it for it to display the same way in both softwares.

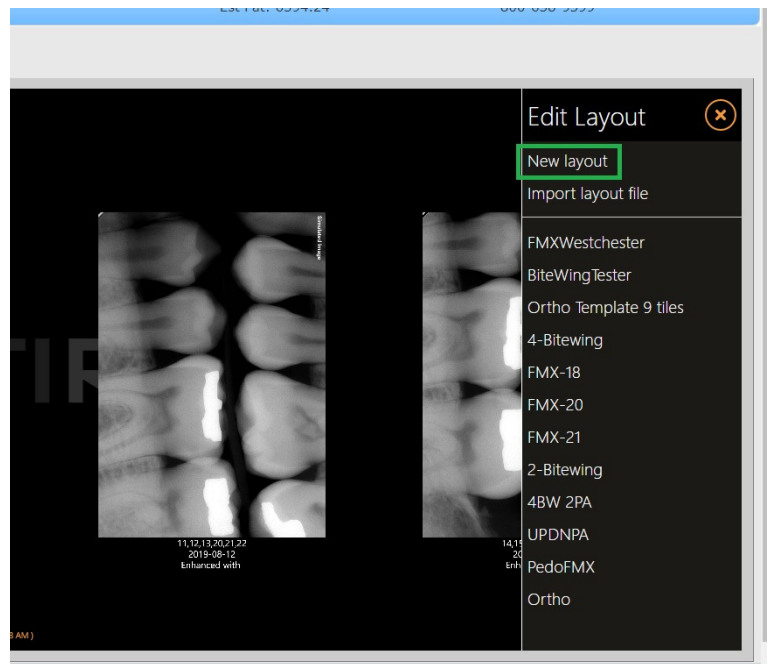
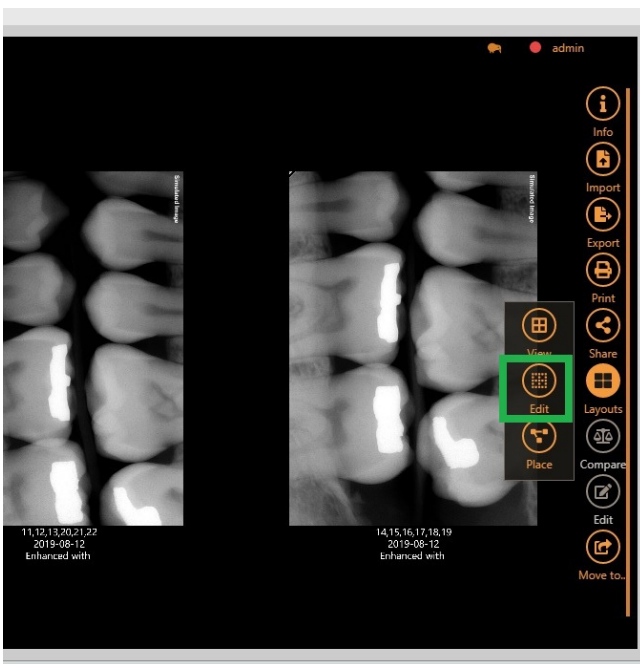
Step 1: Open Denticon to Dentiray Web with the Launch Third Party Application button as if you were viewing images.

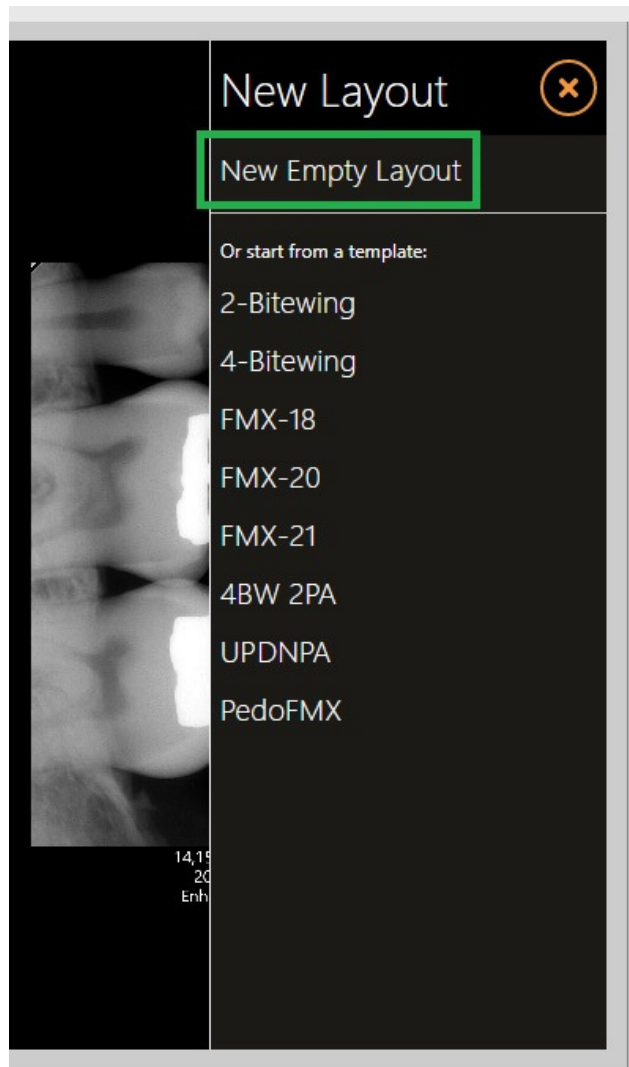
The screenshot displays the Dentiray Web interface. At the top, there is a navigation bar with various icons and a search field. Below this, a patient record is shown for 'Test, Patient' with details such as birth date (5/14/1976), age/sex (44 / F), and insurance information. A green arrow points to the 'Launch Third Party Application' button in the top navigation bar. Below the patient record, a custom layout titled 'Apteryx XVWeb' is displayed, showing four dental X-ray images arranged in a row. The interface includes various toolbars for navigation and image manipulation.

Step 2: Use Launch Aptyx in a New Window to open Aptyx to a bigger interface, you'll need the extra workspace.



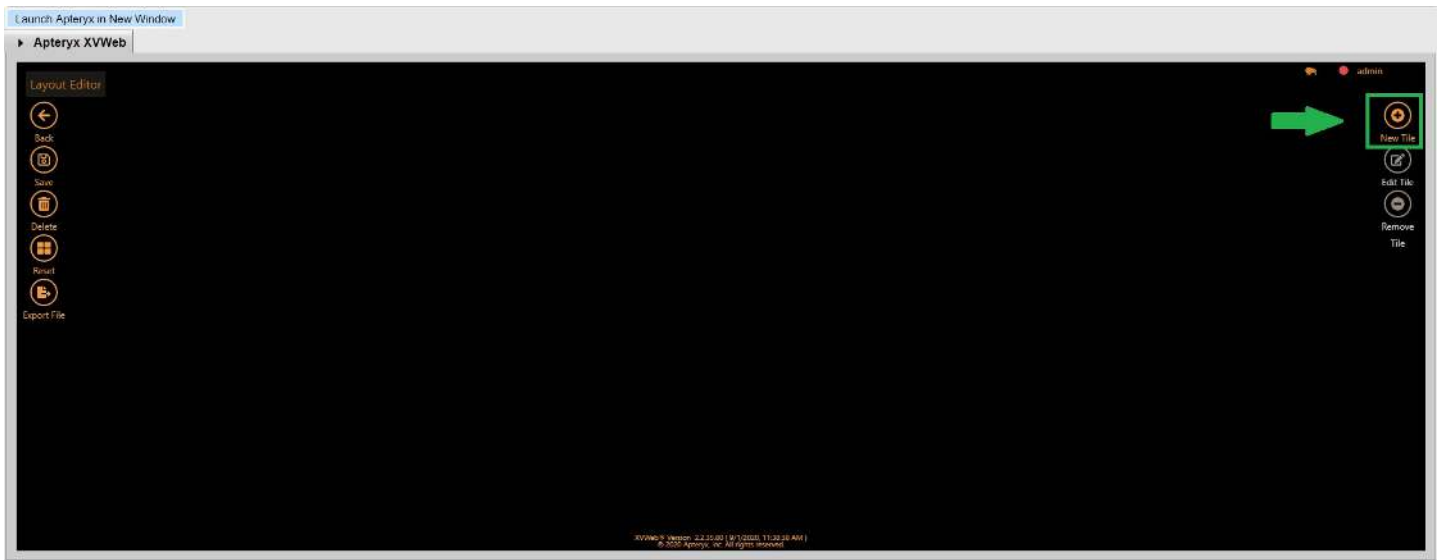
Step 3: Select Layouts on the right hand toolbar, and then select Edit>New Layout>New Blank Layout

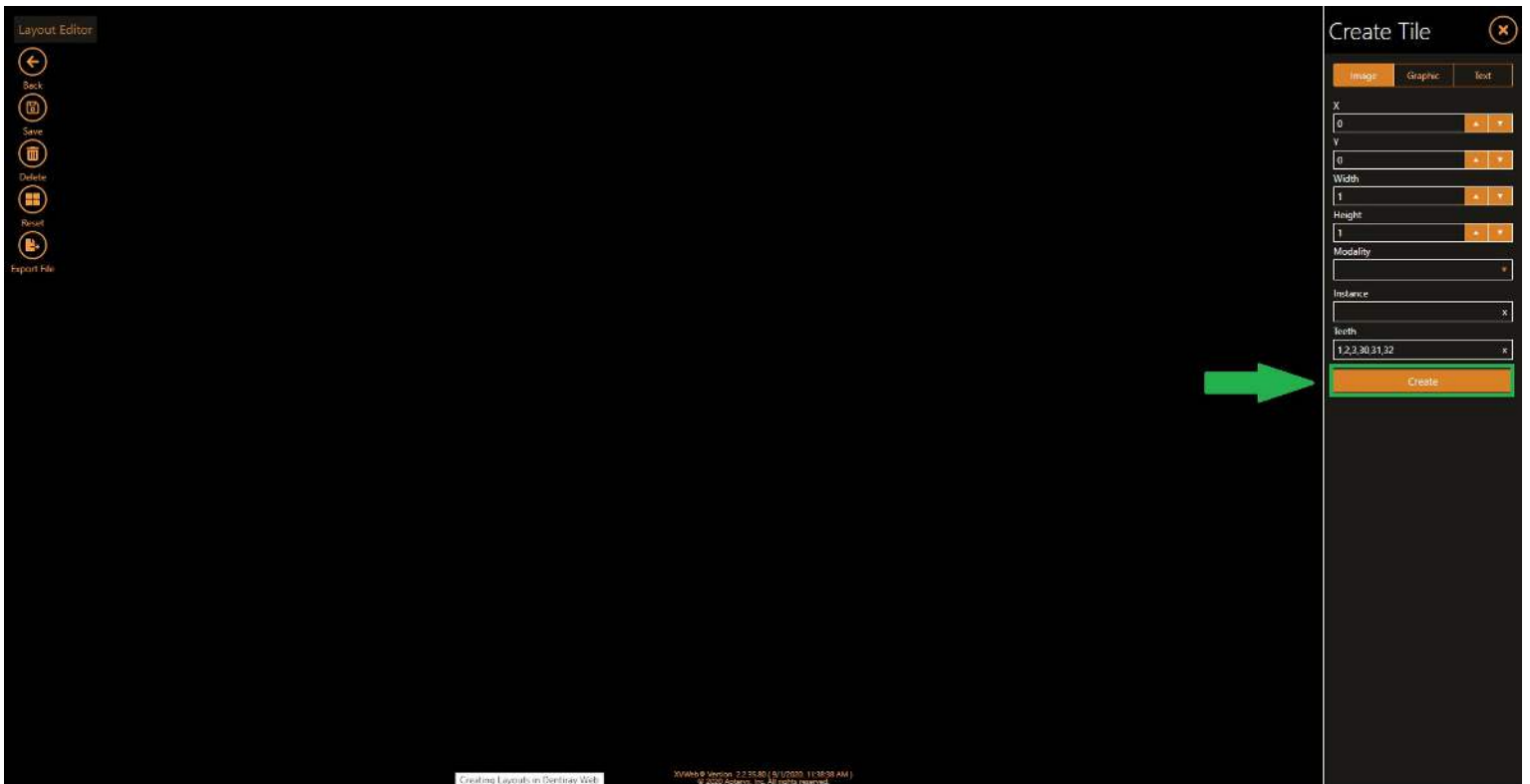
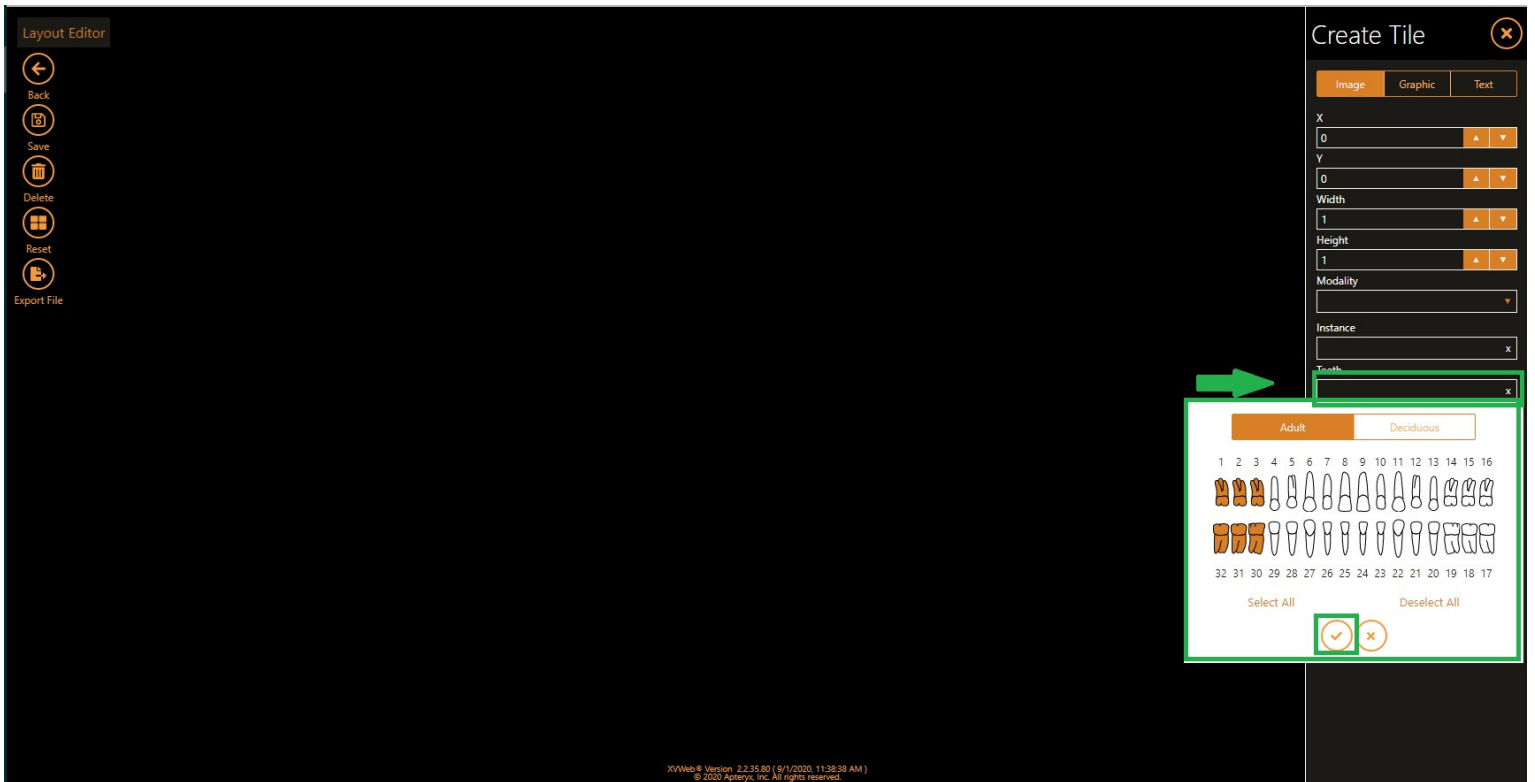




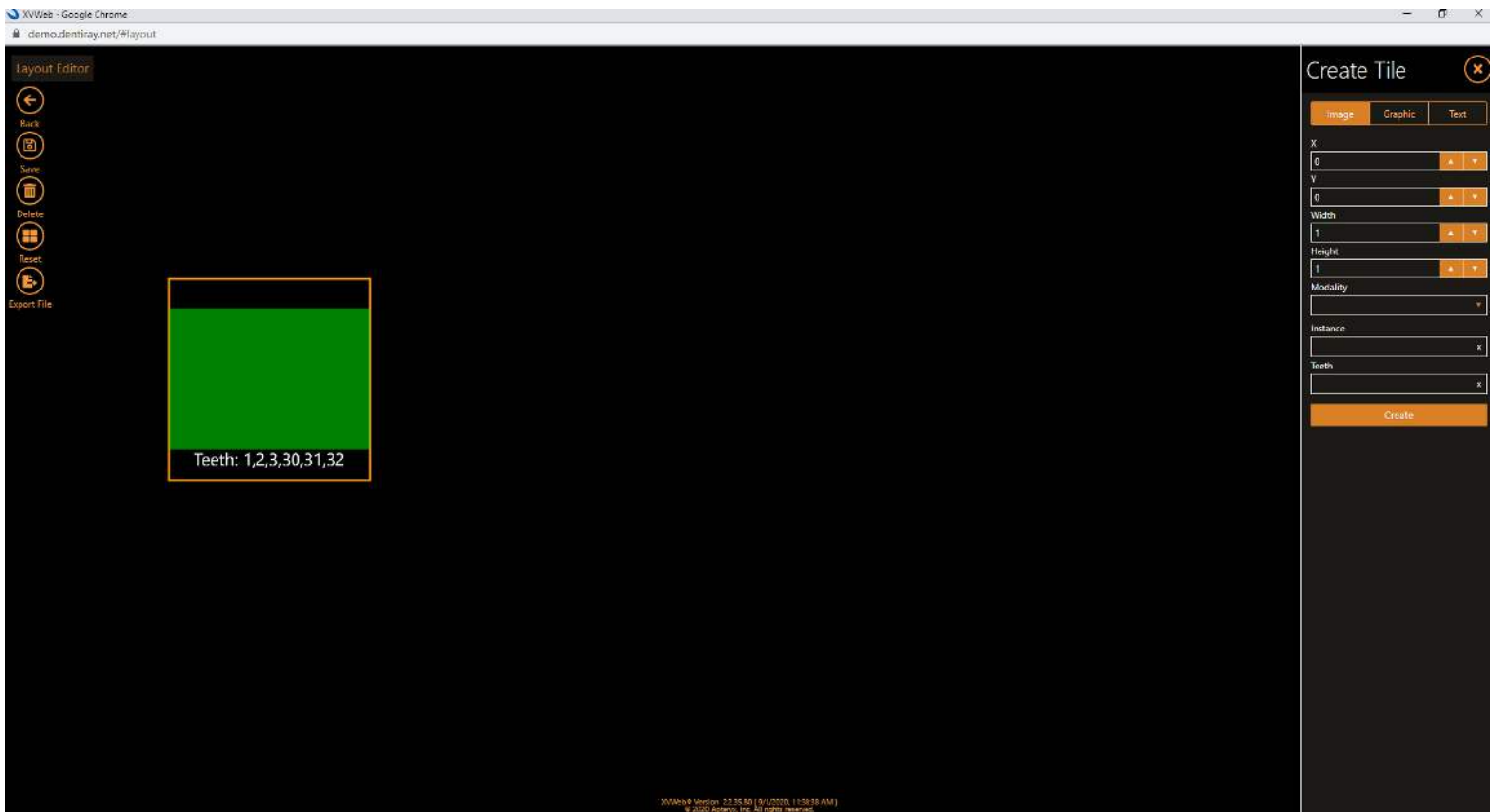
That should bring us to the Layout Editor. In here, we can create a new layout, tile by tile. The goal is to create a tile, assign which tooth numbers this tile should represent, and then place it in the layout where you want to see it positionally.

Step 4: Assign Teeth and Create a Tile

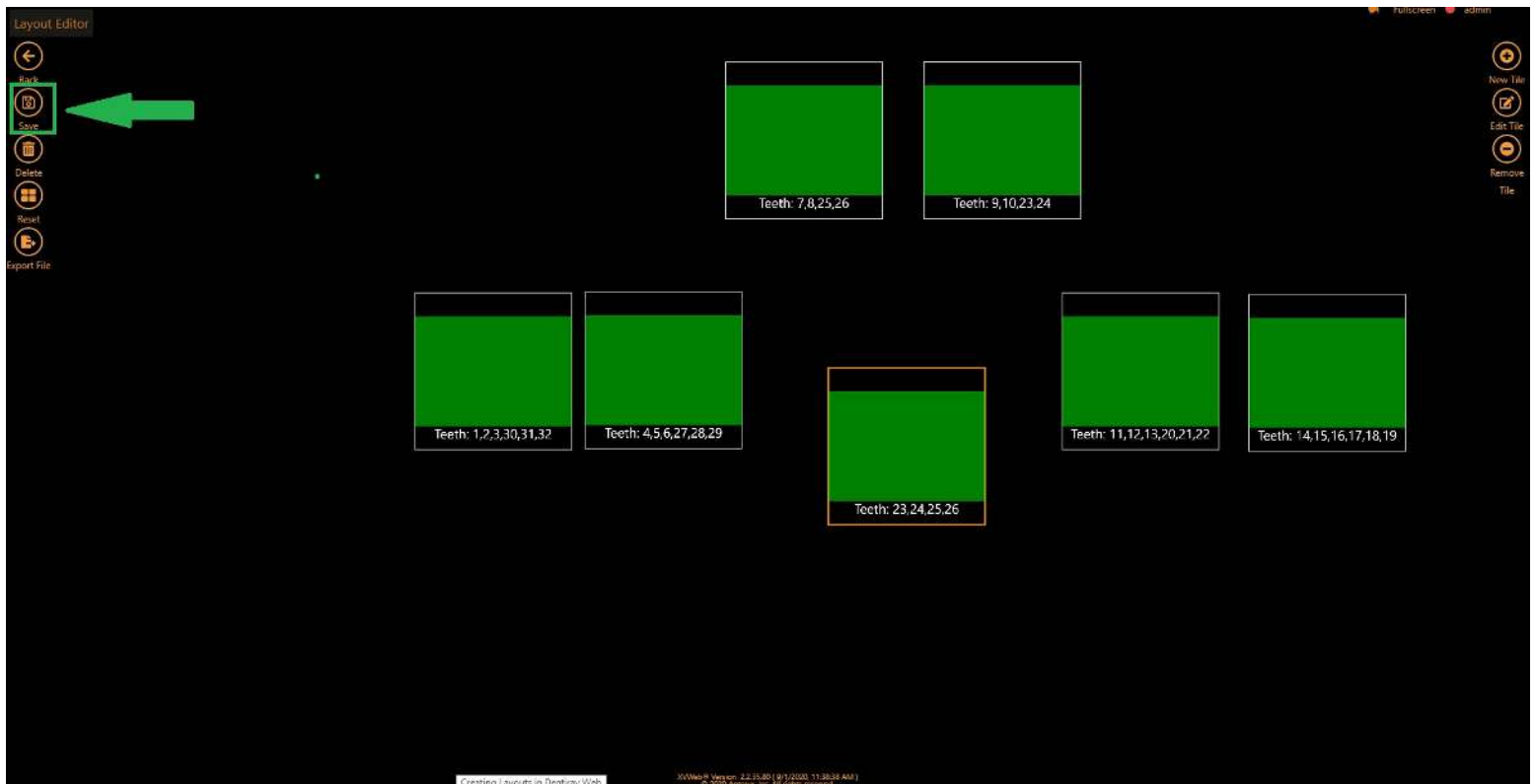




Step 5: You might get a really big tile, that's okay, simply use your mouse wheel or scroll gesture on your touchpad to zoom out and the tile will get smaller. From there place it where you want it to be in the layout for those teeth you assigned to it.



Step 6: Wash Rinse and Repeat - Create as many tiles as you need for your layout assigning them teeth along the way and placing them where you want them to be in the layout. When you have what you want, make sure you give it a name and save your layout.



Save Layout ✕

Name

Recall Exam x

Save

9,10,23,24

Teeth: 11,12,13,20,21,22

Teeth: 14,15,