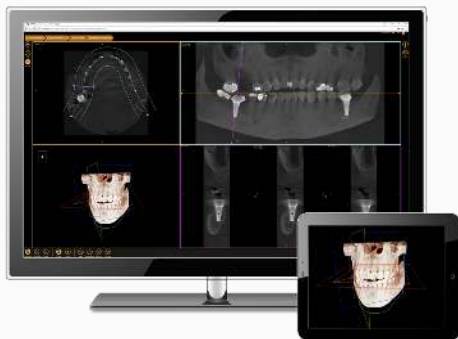


# OPEN-ARCHITECTURE IMAGING SOFTWARE



- Open-architecture seamlessly integrates with imaging devices from most brands
- State of the art image enhancement tools
- Compatible with all leading practice management systems

## An Open Future

XrayVision 4 removes limitations that are inherent in other software platforms by integrating seamlessly with hardware from most major manufacturers, including Carestream, Schick and Gendex, as well as our own imaging devices.

- The widest compatibility with imaging devices
- Integrates with all major practice management systems

## Cutting Edge Image Analysis Tools

A full suite of onboard image enhancement tools and filters allow for improved image quality and accurate diagnoses

- Real-time image filtering
- Brightness, sharpness & noise removal tools
- Full-screen view and image comparison functionality



## White-Glove Customer Support

If you have questions, we have answers. Our highly trained staff is dedicated to ensuring your satisfaction.

- Telephone, email and online chat support
- Dedicated software support reps
- Decades of dental industry-specific experience



## Try XrayVision For Free

XrayVision's open-architecture is compatible with the majority of imaging device brands on the market.

Book a free [demo](#) or visit [www.planetdds.com/solutions/apteryx](http://www.planetdds.com/solutions/apteryx) to learn more.